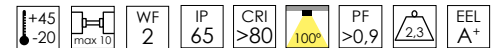
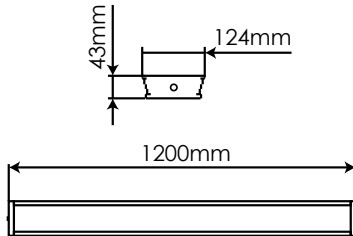
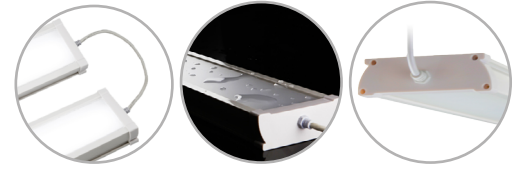


Luminaria integral 30W Blanco frío

Integral fixture 30W Cool white

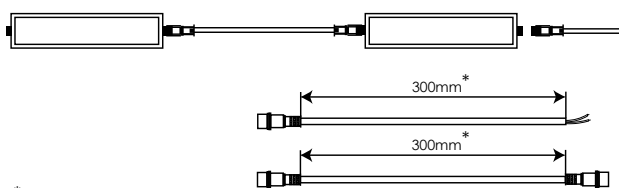
FX230CW2

EAN: 8436546694526



| | |
|---|--|
| Acabado: Blanco / Difusor PMMA | Cover: White / PMMA diffuser |
| Material: PVC + Policarbonato | Material: PVC + Polycarbonate |
| Conexión: L-N (directa) Conexión en serie hasta 10 unidades | Conexión: L-N (direct) SoftConnect up to 10 units |
| Sustituye: 2xT8 36W | Substitute: 2xT8 36W |
| Consumo: 30W | Consumption: 30W |
| Tensión de trabajo: 85-265V AC / 50~60Hz | Working voltage: 85-265V AC / 50~60Hz |
| Número de LEDs: 264 (HONGLITRONIC 2835) | Number of LEDs: 264 (HONGLITRONIC 2835) |
| Temperatura de color: 5000K | Color temperature: 5000K |
| Flujo luminoso: 4200 Lumens | Luminous flux: 4200 Lumens |
| Eficiencia lumínica: 140 Lm/W | Lm/W Efficiency: 140 Lm/W |
| Tamaño: (longitud) 1200mm x (ancho) 124mm x (alto) 43mm | Size: (length) 1200mm x (width) 124mm x (height) 43mm |
| Vida útil aproximada: 50000 horas | Lifespan: 50000 hours |
| Garantía: 5 años | Guarantee: 5 years |
| Datos de embalaje: 6 ud. por caja / (largo) 1262mm x (ancho) 285mm x (alto) 161mm / 13,8 Kg | Packing details: 6 uts. per box / (length) 1262mm x (width) 285mm x (height) 161mm / 13,8 Kg |

Diagrama de conexión *Connection diagram*



* incluidos *included*

Cable opcional
Optional cables

750mm:
FX75CBL / 8436546691891
1500mm:
FX150CBL / 8436546691907
2000mm:
FX200CBL / 8436546691914
3000mm:
FX300CBL / 8436546693673

* 2 clips de instalación incluidos
2 mounting clips included

