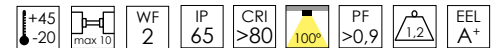
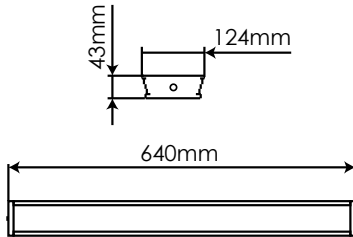
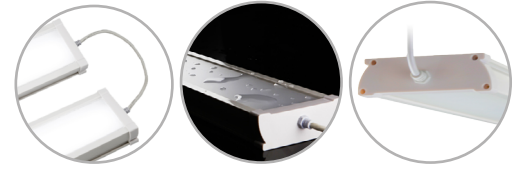


Luminaria integral 15W Blanco cálido

Integral fixture 15W Warm white

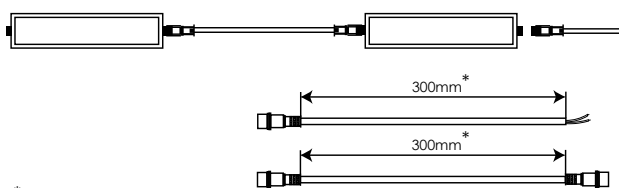
FX615WW2

EAN: 8436546694564



| | |
|--|---|
| Acabado: Blanco / Difusor PMMA | Cover: White / PMMA diffuser |
| Material: PVC + Policarbonato | Material: PVC + Polycarbonate |
| Conexión: L-N (directa) Conexión en serie hasta 10 unidades | Conexión: L-N (direct) SoftConnect up to 10 units |
| Sustituye: 2xT8 18W | Substitute: 2xT8 18W |
| Consumo: 15W | Consumption: 15W |
| Tensión de trabajo: 85-265V AC / 50~60Hz | Working voltage: 85-265V AC / 50~60Hz |
| Número de LEDs: 192 (HONGLITRONIC 2835) | Number of LEDs: 192 (HONGLITRONIC 2835) |
| Temperatura de color: 3000K | Color temperature: 3000K |
| Flujo luminoso: 2100 Lumens | Luminous flux: 2100 Lumens |
| Eficiencia lumínica: 140 Lm/W | Lm/W Efficiency: 140 Lm/W |
| Tamaño: (longitud)640mm x (ancho)124mm x (alto)43mm | Size: (length)640mm x (width)124mm x (height)43mm |
| Vida útil aproximada: 50000 horas | Lifespan: 50000 hours |
| Garantía: 5 años | Guarantee: 5 years |
| Datos de embalaje: 6 ud. por caja / (largo)705mm x (ancho)285mm x (alto)161mm / 7,2 Kg | Packing details: 6 uts. per box / (length)705mm x (width)285mm x (height)161mm / 7,2 Kg |

Diagrama de conexión *Connection diagram*



* incluidos *included*

Cable opcional
Optional cables

- 750mm:**
FX75CBL / 8436546691891
- 1500mm:**
FX150CBL / 8436546691907
- 2000mm:**
FX200CBL / 8436546691914
- 3000mm:**
FX300CBL / 8436546693673

* 2 clips de instalación incluidos
2 mounting clips included

